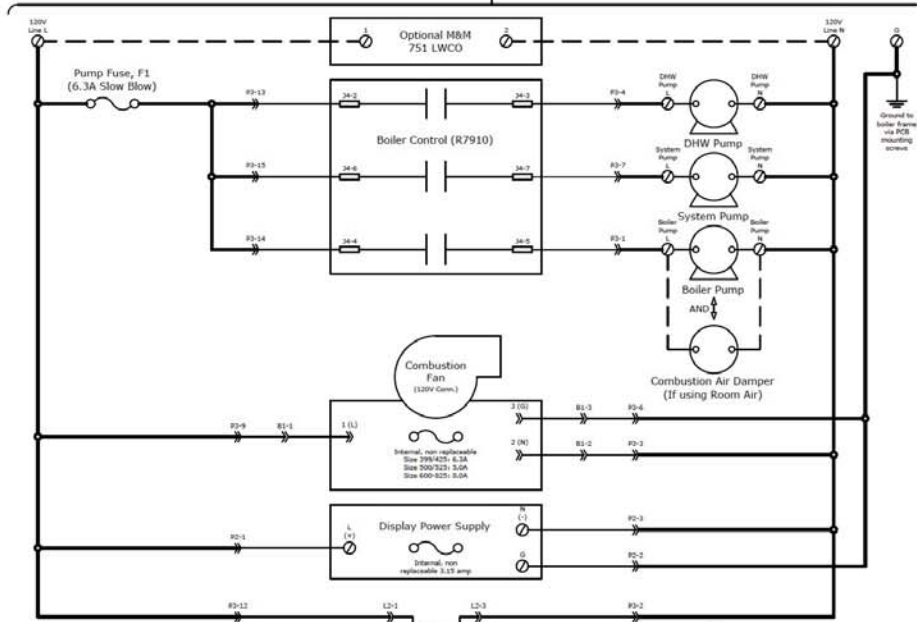
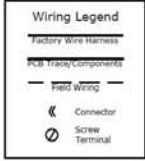
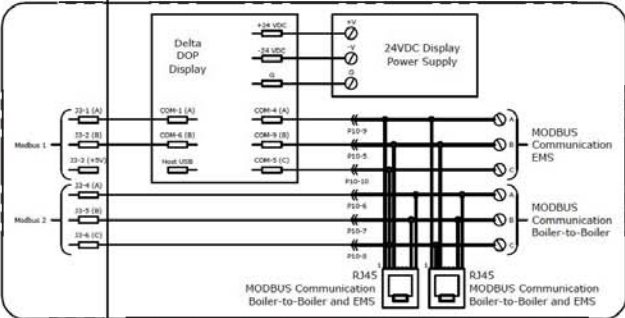
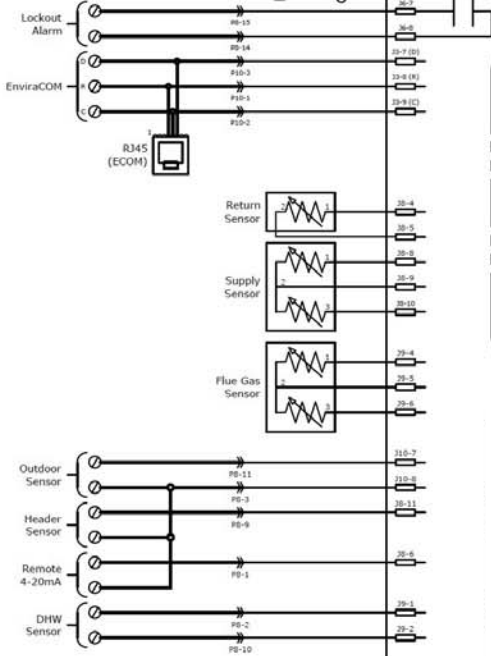
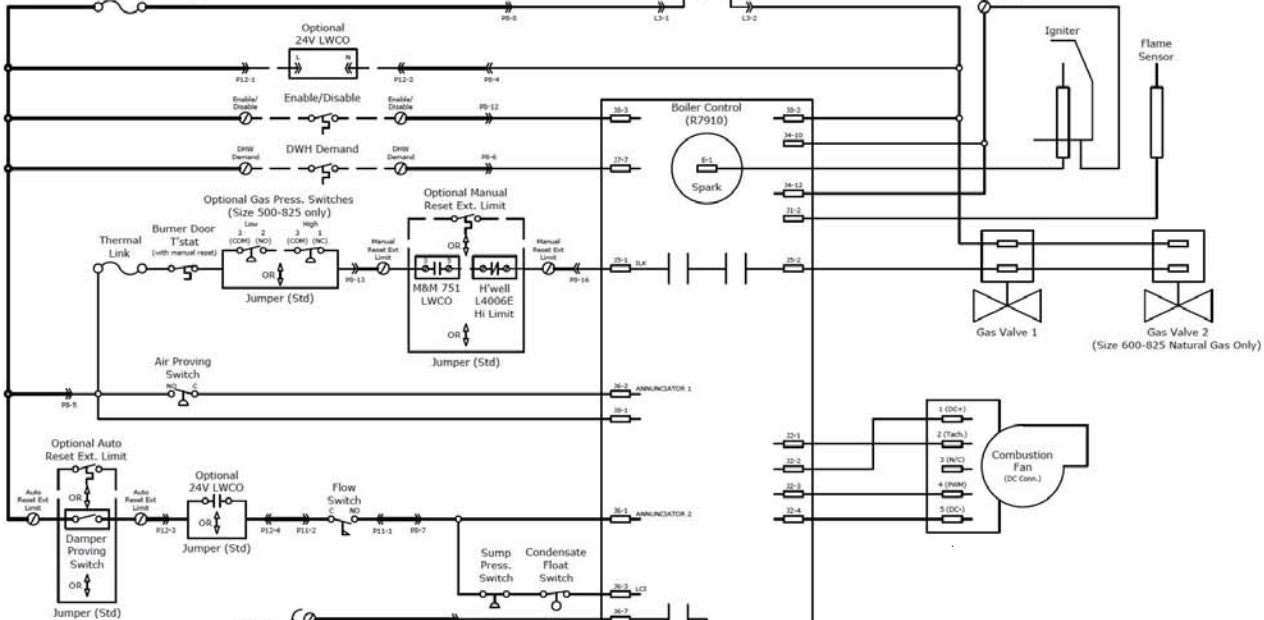
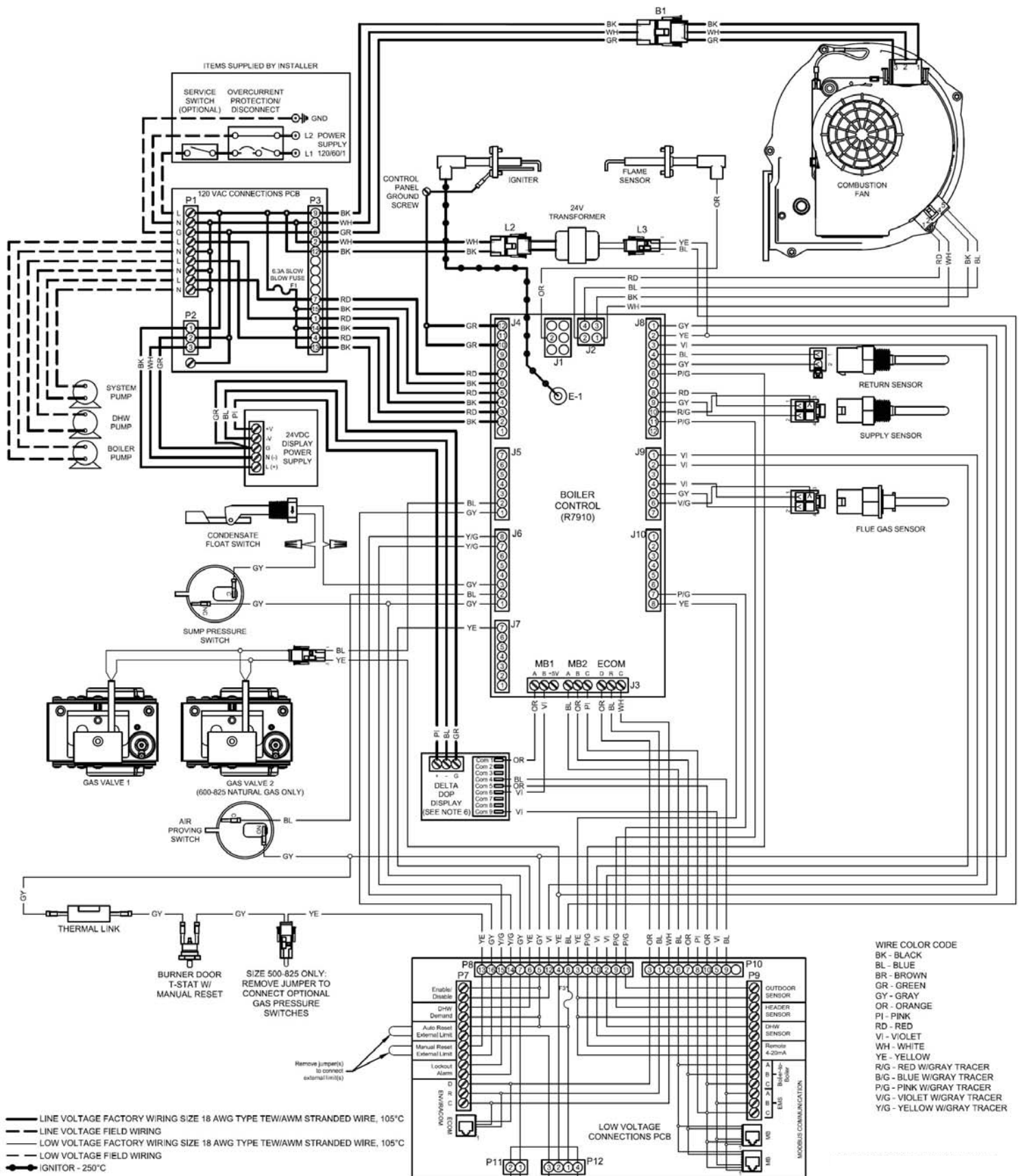


120VAC/60Hz/1Ph
(Line Voltage)



24V Fuse, F3
Size 399-525: 1.6A Slow Blow
Size 600-825: 2.0A Fast Acting





WIRE COLOR CODE
 BK - BLACK
 BL - BLUE
 BR - BROWN
 GR - GREEN
 GY - GRAY
 OR - ORANGE
 PI - PINK
 RD - RED
 VI - VIOLET
 WH - WHITE
 YE - YELLOW
 R/G - RED W/GRAY TRACER
 B/G - BLUE W/GRAY TRACER
 P/G - PINK W/GRAY TRACER
 V/G - VIOLET W/GRAY TRACER
 Y/G - YELLOW W/GRAY TRACER

— LINE VOLTAGE FACTORY WIRING SIZE 18 AWG TYPE TEW/AWM STRANDED WIRE, 105°C
 - - - LINE VOLTAGE FIELD WIRING
 — LOW VOLTAGE FACTORY WIRING SIZE 18 AWG TYPE TEW/AWM STRANDED WIRE, 105°C
 - - - LOW VOLTAGE FIELD WIRING
 ●— IGNITER - 250°C

- NOTES:**
1. INSTALL OVERCURRENT PROTECTION IN ACCORDANCE WITH AUTHORITY HAVING JURISDICTION OR, IN THE ABSENCE OF SUCH REQUIREMENTS, FOLLOW THE NATIONAL ELECTRIC CODE, NFPA 70, AND/OR CSA C22.1 ELECTRICAL CODE. **DO NOT** PROVIDE OVERCURRENT PROTECTION GREATER THAN 15 AMPERES.
 2. IF ANY OF THE ORIGINAL WIRE SUPPLIED WITH THE APPLIANCE MUST BE REPLACED, IT MUST BE REPLACED WITH THE SAME TYPE SHOWN OR ITS EQUIVALENT. S'IL FAUT REMPLACER UN FIL QUELCONQUE D'ORIGINE FOURNI AVEC L'APPAREIL, UTILISER OBLIGATOIREMENT UN FIL MÊME TYPE DONNÉ OU SON ÉQUIVALENT.
 3. WHERE REQUIRED BY LOCAL CODES, CONNECT MANUAL RESET LWCO AND HIGH LIMIT AS SHOWN.
 4. DO NOT EXCEED 5.6A TOTAL PUMP CURRENT DRAW (BOILER PUMP + SYSTEM PUMP + DHW PUMP + COMBUSTION AIR DAMPER). FOR PUMPS WITH AMP RATINGS GREATER THAN 5.6A, USE RELAY OR STARTER COIL CONNECTED TO PUMP TERMINALS ON BOILER 120V PCB.
 5. COMBUSTION AIR DAMPER AND PROVING SWITCH ARE REQUIRED IF USING ROOM AIR FOR COMBUSTION WITH MOTORIZED DAMPER(S) OR LOUVER(S).
 6. ENERGY MANAGEMENT SYSTEM WIRING CAN BE DONE WITH RJ45 PLUGS OR USING SCREW TERMINALS A, B AND C LABELED 'EMS'

